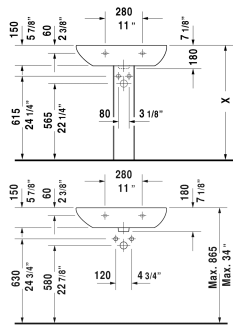
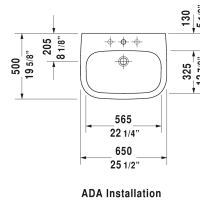
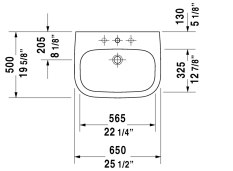
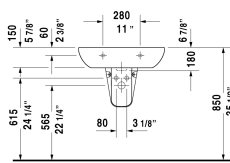


D-Code Washbasin ♂ # 23106500002 / 23106500302

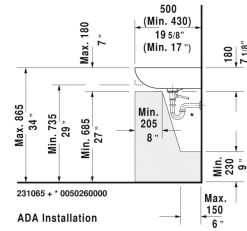
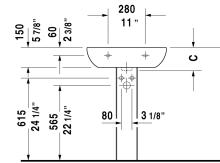
< 25 5/8" Inch >



ADA Installation



ADA Installation



ADA Installation

Washbasin	Dimension	Weight	Order number
with overflow, with faucet deck, underside fully glazed, hardware included, wall-mounted, cUPC® listed*, 25 5/8" Inch			
Colors			
00 White			
Variant			
●	25 5/8" x 19 5/8" Inch	47.5 lb	23106500002
●●●	25 5/8" x 19 5/8" Inch	47.5 lb	23106500302
Infobox	* Complies with following standards: ASME A112.19.2/CSA B45.1, Washbasin is not ADA compliant in combination with pedestal, siphon cover or metal console		

All drawings contain the necessary measurements which are subject to standard tolerances. They are stated in inch & mm and are non-binding. Exact measurements, in particular for customized installation scenarios, can only be taken from the finished ceramic piece.